

AAMP Polyclonal Antibody
Purified Rabbit Polyclonal Antibody (Pab)
Catalog # AP54481**Specification**

AAMP Polyclonal Antibody - Product Information

Application	WB, IHC-P, IHC-F, IF, ICC, E
Primary Accession	Q13685
Reactivity	Rat, Pig, Dog, Bovine
Host	Rabbit
Clonality	Polyclonal
Calculated MW	46751

AAMP Polyclonal Antibody - Additional Information**Gene ID 14****Other Names**

Angio-associated migratory cell protein, AAMP

Dilution

WB~~1:1000<br \>IHC-P~~N/A<br \>IHC-F~~N/A<br \>IF~~1:50~200<br \>ICC~~N/A<br \>E~~N/A

Format

0.01M TBS(pH7.4), 0.09% (W/V) sodium azide and 50% Glyce

Storage

Store at -20 °C for one year. Avoid repeated freeze/thaw cycles. When reconstituted in sterile pH 7.4 0.01M PBS or diluent of antibody the antibody is stable for at least two weeks at 2-4 °C.

AAMP Polyclonal Antibody - Protein Information**Name AAMP****Function**

Plays a role in angiogenesis and cell migration. In smooth muscle cell migration, may act through the RhoA pathway.

Cellular Location

Cell membrane. Cytoplasm.

Tissue Location

Expressed in metastatic melanoma, liver, skin, kidney, heart, lung, lymph node, skeletal muscle and brain, and also in A2058 melanoma cells and activated T-cells (at protein level) Expressed in

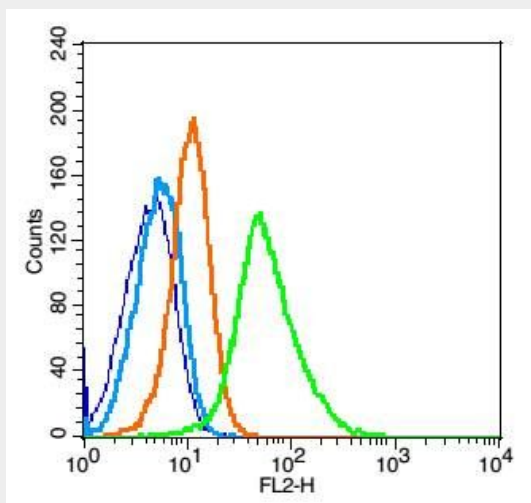
blood vessels. Strongly expressed in endothelial cells, cytotrophoblasts, and poorly differentiated. colon adenocarcinoma cells found in lymphatics.

AAMP Polyclonal Antibody - Protocols

Provided below are standard protocols that you may find useful for product applications.

- [Western Blot](#)
- [Blocking Peptides](#)
- [Dot Blot](#)
- [Immunohistochemistry](#)
- [Immunofluorescence](#)
- [Immunoprecipitation](#)
- [Flow Cytometry](#)
- [Cell Culture](#)

AAMP Polyclonal Antibody - Images



Blank control(blue): Raji(fixed with 2% paraformaldehyde (10 min)).

Primary Antibody:Rabbit Anti-AAMP antibody(bs-11388R), Dilution: 1 μ g in 100 μ L 1X PBS containing 0.5% BSA;

Isotype Control Antibody: Rabbit IgG(orange) ,used under the same conditions);

Secondary Antibody: Goat anti-rabbit IgG-PE(white blue), Dilution: 1:200 in 1 X PBS containing 0.5% BSA.